

T&J ELECTRIC (SINGAPORE) PTE LTD

Company Registration No: 200205797Z
10 Ubi Crescent, #02-24, Ubi Techpark, Singapore 408564
Telephone: +65 6547-4333 Fax: +65 6547-4666

Date: Feb 26th, 2020

Subject: Product Info: JC2-DCM2-W (1-10V DC Dimmer)

Features:

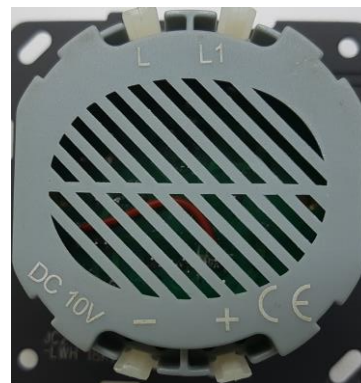
- JC2-DCM2-W is used to control a dimmable electronic ballast/driver to implement dimming function on fluorescent lamp, PLC lamp and LED light.
- The dimmable electronic ballast/driver should have isolated output and can accept a control voltage from 1V DC to 10V DC (sinking current) *.



JC2-DCM2-W (Front View)

Technical Data:

- Product Range: **Lavina "95"**
(Intermediate Module)
Applicable colours such as:
White (LWH), Black (LBL), Gray (LGR), etc.
 - Push ON/OFF Switch rating:
220~250VAC, 50/60Hz 6A (Resistive)
 - Dimming terminals:
Control Voltage: 1-10V DC
Rated Current: 50mA DC
 - Compliance: IEC60669
 - Mounting Box: ≥40 mm depth
 - Dimension: ~74.1 mm x 74.1 mm
 - Fix Center: 60.3 mm
 - Fix Screws: M3.5x0.6x25±
 - Recommended wire size: 0.5mm²~1.5mm²
 - Packing: 50 pcs/5 boxes/1 carton
- *refer to details at the last section on application



JC2-DCM2-W (Back View)

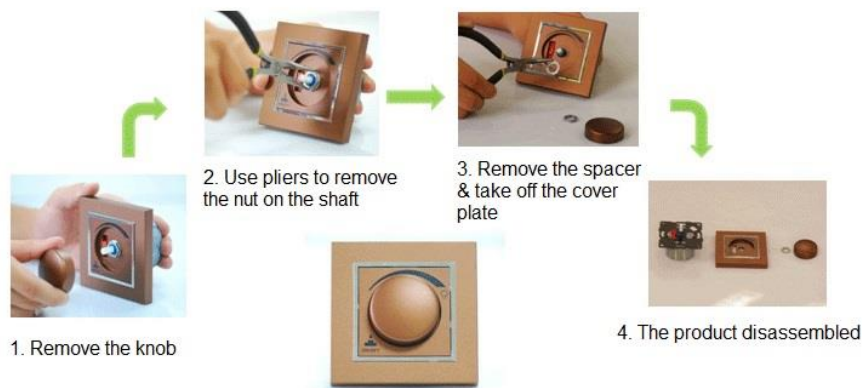
T&J ELECTRIC (SINGAPORE) PTE LTD

Company Registration No: 200205797Z
10 Ubi Crescent, #02-24, Ubi Techpark, Singapore 408564
Telephone: +65 6547-4333 Fax: +65 6547-4666

Date: Feb 26th, 2020

Subject: **Product Info: JC2-DCM2-W (1-10V DC Dimmer)**

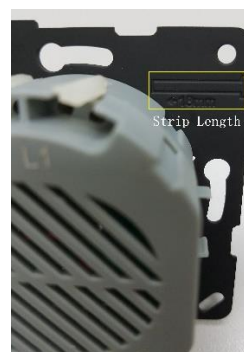
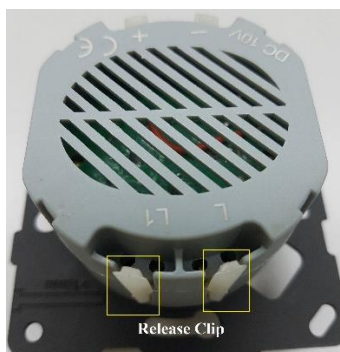
Dimmer module frame disassembly



Lavina '95" Dimmer disassembly pictorial

Recommended dimmer termination

- Solid wire with insulation stripped away ~18mm
- Push wire fully into termination hole
- Press release clip outward to remove wire



T&J ELECTRIC (SINGAPORE) PTE LTD

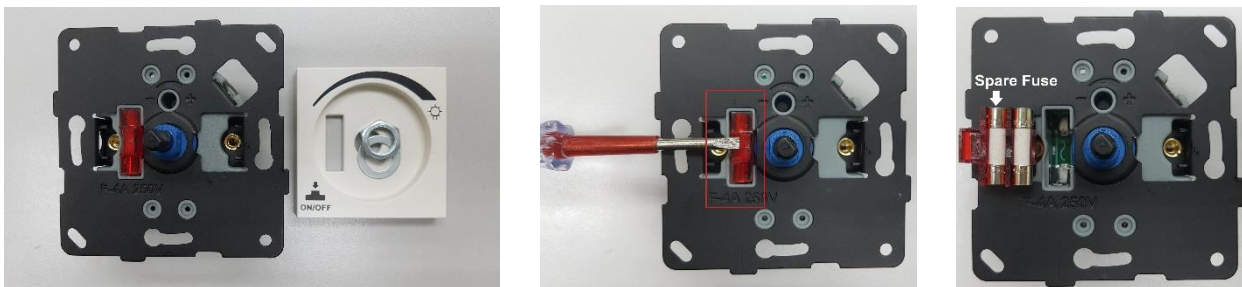
Company Registration No: 200205797Z
10 Ubi Crescent, #02-24, Ubi Techpark, Singapore 408564
Telephone: +65 6547-4333 Fax: +65 6547-4666

Date: Feb 26th, 2020

Subject: Product Info: JC2-DCM2-W (1-10V DC Dimmer)

Fuse replacement

- Remove nut and washer to take off the cover plate
- Use suitable screw-driver to push up fuse holder
- A spare F4A fuse is provided



Minimum brightness adjustment

- Carefully adjust trimmer to set minimum brightness when main knob is turned fully anti-clockwise
- For LED dimming, do not set too low/dim as LED lamp may not turn on if main power is switched off then on again



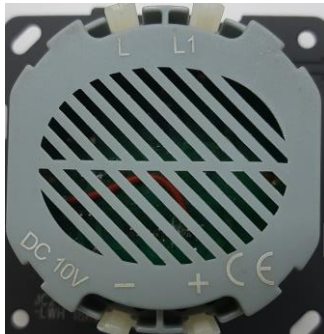
T&J ELECTRIC (SINGAPORE) PTE LTD

Company Registration No: 200205797Z
10 Ubi Crescent, #02-24, Ubi Techpark, Singapore 408564
Telephone: +65 6547-4333 Fax: +65 6547-4666

Date: Feb 26th, 2020

Subject: **Product Info: JC2-DCM2-W (1-10V DC Dimmer)**

Wiring Diagram for Fluorescent dimmable ballast:



L - AC input "LIVE"
L1 - connect to Driver/Ballast
"+" -> dim "+" terminal of Ballast/Driver
"-" -> dim "-" terminal of Ballast/Driver

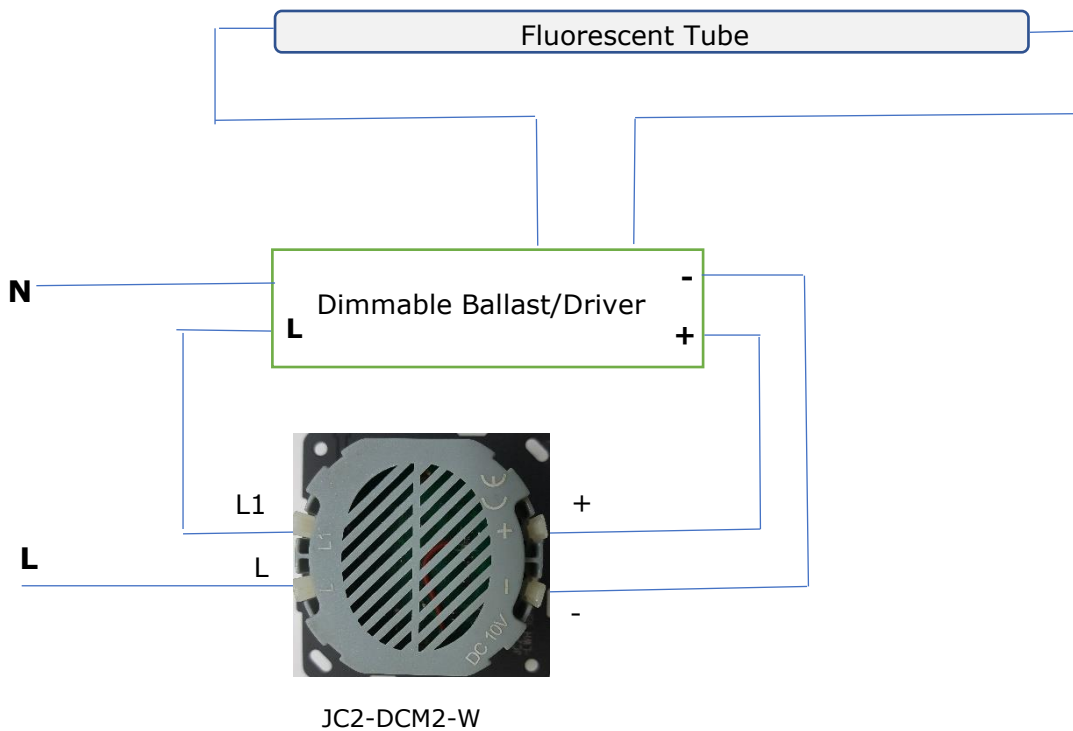


Fig. 1: Fluorescent dimmable ballast

T&J ELECTRIC (SINGAPORE) PTE LTD

Company Registration No: 200205797Z
10 Ubi Crescent, #02-24, Ubi Techpark, Singapore 408564
Telephone: +65 6547-4333 Fax: +65 6547-4666

Date: Feb 26th, 2020

Subject: **Product Info: JC2-DCM2-W (1-10V DC Dimmer)**

Wiring diagram for Dimmable LED Driver:

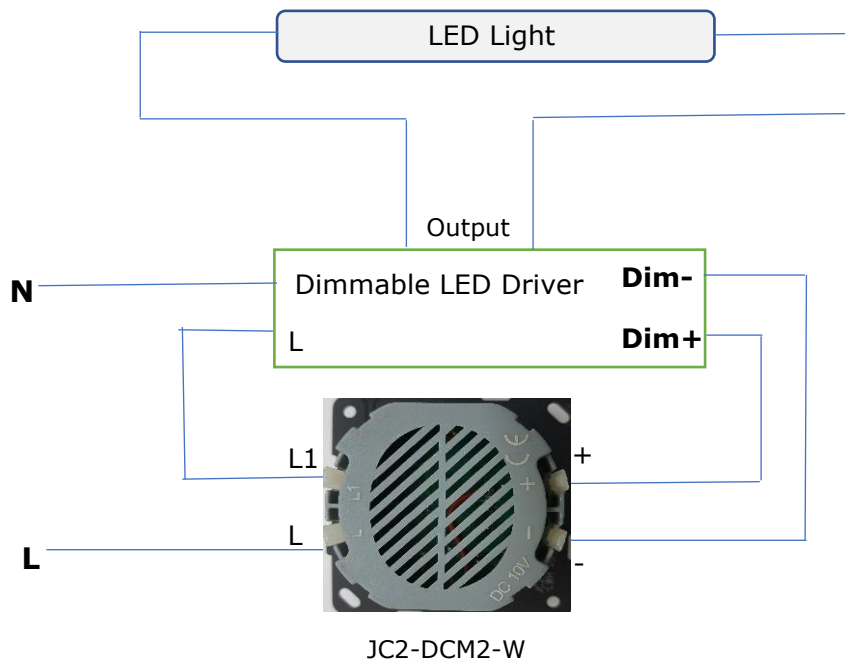


Fig. 2: LED dimmable driver

Company Registration No: 200205797Z
10 Ubi Crescent, #02-24, Ubi Techpark, Singapore 408564
Telephone: +65 6547-4333 Fax: +65 6547-4666

Date: Feb 26th, 2020

Subject: **Product Info: JC2-DCM2-W (1-10V DC Dimmer)**

Wiring diagram for External ON/OFF switch connection:

- for application when lighting load current exceed push-on switch rating

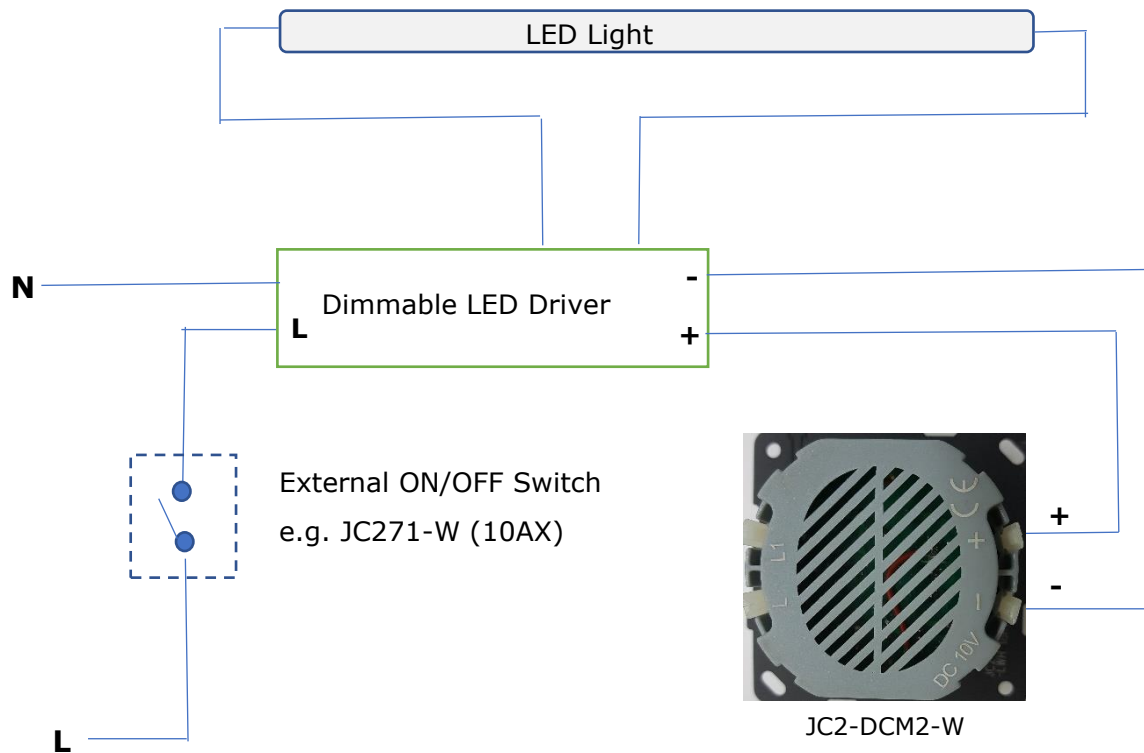


Fig. 3: Using External ON/OFF Toggle Switch

T&J ELECTRIC (SINGAPORE) PTE LTD

Company Registration No: 200205797Z
10 Ubi Crescent, #02-24, Ubi Techpark, Singapore 408564
Telephone: +65 6547-4333 Fax: +65 6547-4666

Date: Feb 26th, 2020

Subject: Product Info: JC2-DCM2-W (1-10V DC Dimmer)

Application note:

- Ensure the proper connection on the "+" and "-" terminal, observe polarity.
- To achieve best minimum lighting level, adjust trimmer behind the cover plate/knob.
- It requires to work with a dimmable electronic ballast/driver and cannot connect directly to the fluorescent lamp or LED light.
- The low voltage dimming circuit (+ & - terminal) is protected with a fuse (F-4A).
- The Push ON/OFF switch is rated at 6 Ampere resistive load, de-rating required for high surge electronic driver loads. For higher AC load current an external switch can be installed (see Fig 3).
- The JC2-DCM2-W dimmer supports dimming ballast standard, that is, current sink control (see Fig. 4 below) and is not compatible with LED driver that requires current source control.

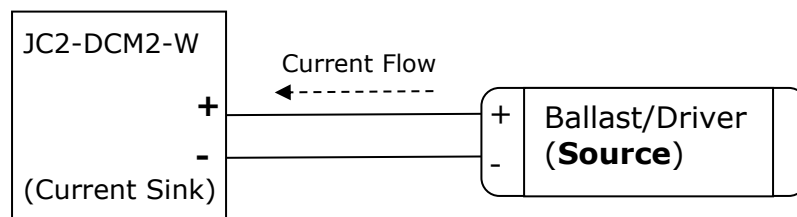


Fig. 4 "Source" – control DC voltage supply provided by Driver side