

T&J ELECTRIC (SINGAPORE) PTE LTD

Company Registration No: 200205797Z
10 Ubi Crescent, #02-24, Ubi Techpark, Singapore 408564
Telephone: +65 6547-4333 Fax: +65 6547-4666

Date: 14th May 2019

Subject: Product Info:

JC2-M2

(600W 230V 1-Gang Dimmer with Push on-off switch)

Technical Data:

- Product Range: **Lavina "95"**
(Intermediate Module)
Applicable colours such as:
White (LWH), Black (LBL), Gray (LGR), etc.
- Rated Voltage: 230VAC
- Maximum Load: 600W (Resistive)
- Minimum Load: 40W (Resistive)
- Leading-edge dimming
- Overheating protection
(Thermal fuse 150°C),
- Short-circuit protection
(Fast-blow fuse F4A)
- EMC compliance
- Dimension: ~74.1 mm x 74.1 mm
- Fix Center: 60 mm
- Fix Screws: M3 x 0.5 x 25mm±
- Recommended wire size:
Solid wire 0.5mm²~1.5mm²
- Mounting Box: 40 mm depth
(minimum)
- Packing: 60 pcs/10 boxes/1 carton



Front View of JC2-M2-W-LWH



Back View of JC2-M2-W-LWH

T&J ELECTRIC (SINGAPORE) PTE LTD

Company Registration No: 200205797Z
10 Ubi Crescent, #02-24, Ubi Techpark, Singapore 408564
Telephone: +65 6547-4333 Fax: +65 6547-4666

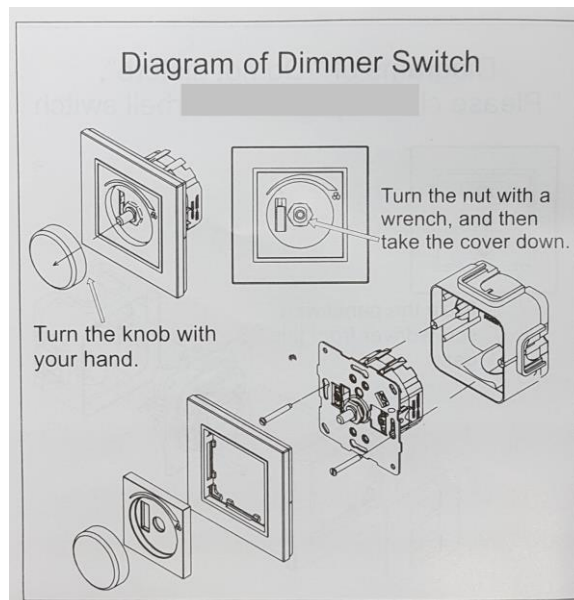
Date: 14th May 2019

Subject: **Product Info:**

JC2-M2

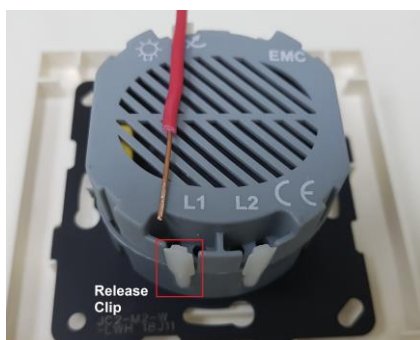
(600W 230V 1-Gang Dimmer with Push on-off switch)

Dimmer module frame assembly



Dimmer termination

- Solid wire with insulation stripped away ~18mm
- Push wire fully into termination hole
- Press release clip outward to remove wire



T&J ELECTRIC (SINGAPORE) PTE LTD

Company Registration No: 200205797Z
10 Ubi Crescent, #02-24, Ubi Techpark, Singapore 408564
Telephone: +65 6547-4333 Fax: +65 6547-4666

Date: 14th May 2019

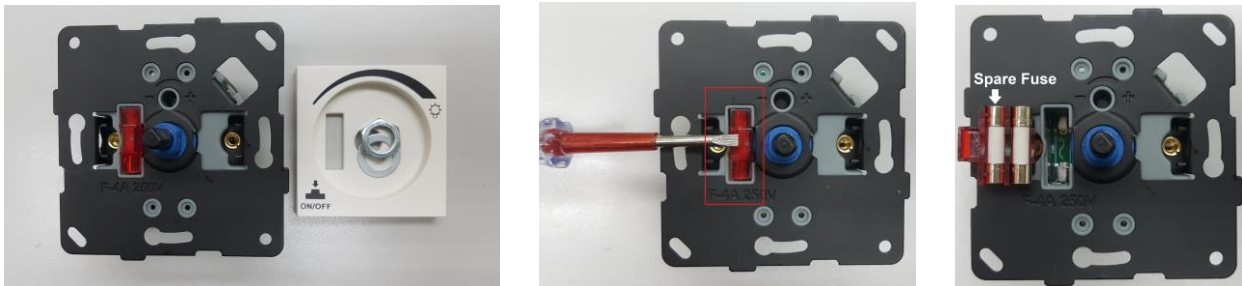
Subject: Product Info:

JC2-M2

(600W 230V 1-Gang Dimmer with Push on-off switch)

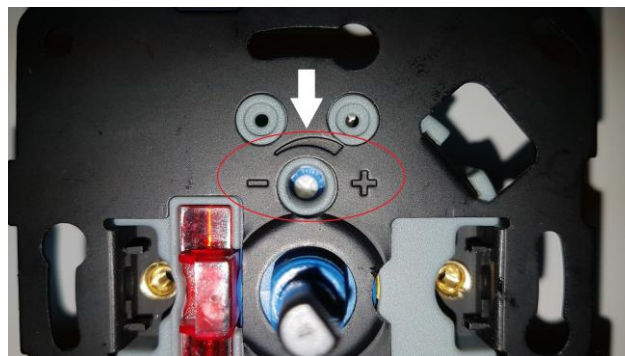
Fuse replacement

- Remove nut and washer to take off the cover plate
- Use suitable screw-driver to push up fuse holder
- A spare F4A fuse is provided



Minimum brightness adjustment

- Carefully adjust trimmer to set minimum brightness when main knob is turned fully anti-clockwise
- For LED dimming, do not set too low/dim as LED lamp may not turn on if main power is off then on again



T&J ELECTRIC (SINGAPORE) PTE LTD

Company Registration No: 200205797Z
10 Ubi Crescent, #02-24, Ubi Techpark, Singapore 408564
Telephone: +65 6547-4333 Fax: +65 6547-4666

Date: 14th May 2019

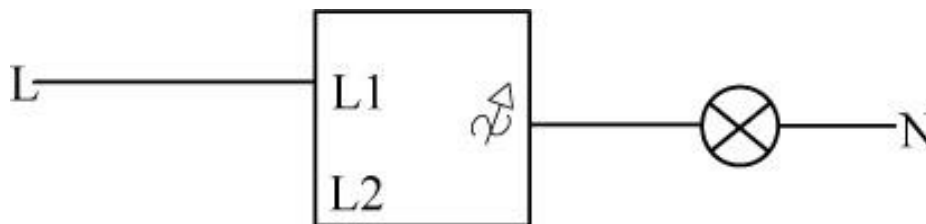
Subject: **Product Info:**

JC2-M2

(600W 230V 1-Gang Dimmer with Push on-off switch)

Dimmer Connection Diagram:

1. 1-Gang Dimmer as 1-Way switch configuration



2. 1-Gang Dimmer with 2-Way switch configuration

